



Figure A

Figure 7: Aerial Photograph Plan of Ocean View Rd & Historic Reserve Area

Matiatia Marina AEE Folio of Figures 12/03/2013

Surveyed by: GG & PR	Date: MARCH 2010
Drawn by: M.Horley	Date: 23.11.2010
CHART DATUM	
Datum Mark:-	
Datum Level:-	

THIS PLAN AND DESIGN REMAINS THE PROPERTY OF, AND MAY NOT BE REPRODUCED WITHOUT WRITTEN PERMISSION OF AXIS SURVEY CONSULTANTS (Auck) Ltd.

THIS PLAN HAS BEEN PREPARED SOLELY FOR THE BENEFIT OF OUR CLIENT AND AXIS SURVEY CONSULTANTS (AUCK) LTD ACCEPTS NO LIABILITY TO ANY OTHER PARTY.

THIS PLAN HAS BEEN PREPARED SOLELY FOR THE PURPOSE OF OBTAINING A RESOURCE CONSENT. ALL DIMENSIONS & AREAS ARE PROVISIONAL.

REVIAMENDMENTS	DATE

PROJECT:

MATIATIA BAY, WAIHEKE ISLAND
WAIHEKE MARINA LTD

PROPOSED MARINA LAYOUT
PRE-DEVELOPMENT

Resource Consent Managers
Land Surveyors
Land Development Engineers

axis
CONSULTANTS

P: 480-2648 - F: 480-2650 106 Mokoia Road,
E: info@axis-consultants.co.nz Birkenhead, Auckland.

PROJECT No:	10150
DRAWING No:	A-01
ORIGINAL SCALE: A3	1:500



View of Reserve Access – Date: 27-02-2013 – Low Tide



View of Reserve - Date: 27-02-2013 – Low tide

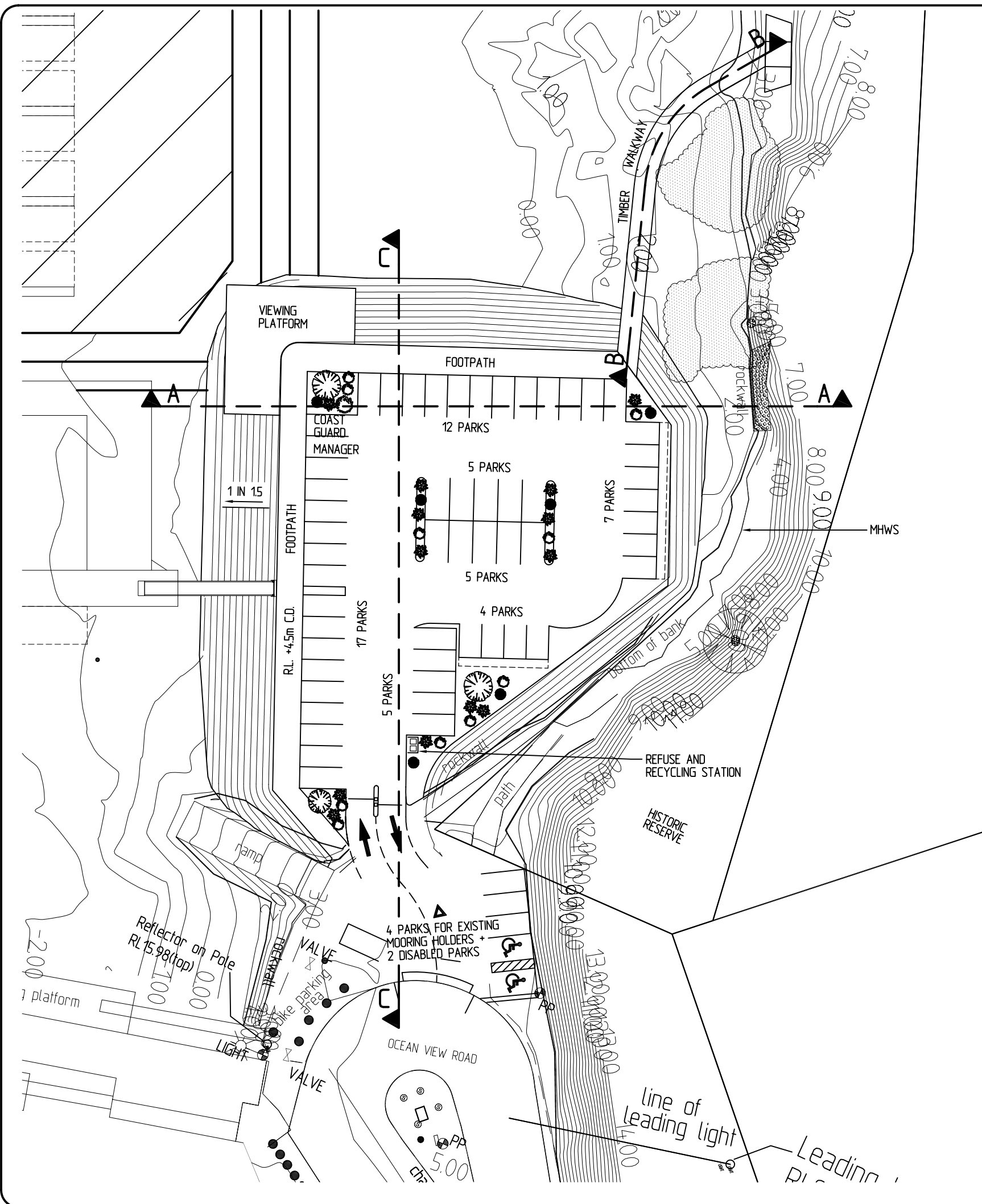


View of Slip on Reserve – Date: 27-02-2013 – Low Tide



View of Boulders Placed at Bottom of Pohutakawa Trees - Date: 27-02-2013 – Low tide

Figure B



NOTES:

1. ALL LEVELS ARE IN METRES AND REDUCED TO CHART DATUM.
2. ON SHORE LAYOUT AND CONTOURS ARE BASED ON AXIS CONSULTANTS DRAWING FILE : 10150-SS01.DWG



D 11/03/13 PARKING LAYOUT UPDATED
 C 14/02/13 ISSUED FOR RESOURCE CONSENT ISSUE
 B 12/02/13 BOLLARDS DELETED, MOORING HOLDER'S PARKING DESIGNATED, REFUSE AND RECYCLING STATION ADDED
 A 13/11/12 PARKING LAYOUT REVISED, MARINA LAYOUT UPDATED

Revisions

This plan is copyright and cannot be used or reproduced without the written permission of International Marina Consultants

International Marina Consultants

Consultants to the Marina Industry.

International Marina Consultants Pty. Ltd.
 A.C.N. 079 905 481

473 Annerley Road
 ANNERLEY QLD 4103
 AUSTRALIA
 Phone (07)3892 5711 Fax (07)3892 5611
 Email : imc@imc-marinas.com

CLIENT:

WAIHEKE MARINAS LIMITED

PROJECT:

MATIATIA MARINA

TITLE:

PROPOSED PARKING LAYOUT

FOR SECTIONS A, B & C
 REFER TO 4208-105

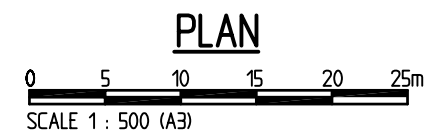


Figure C

RESOURCE CONSENT ISSUE

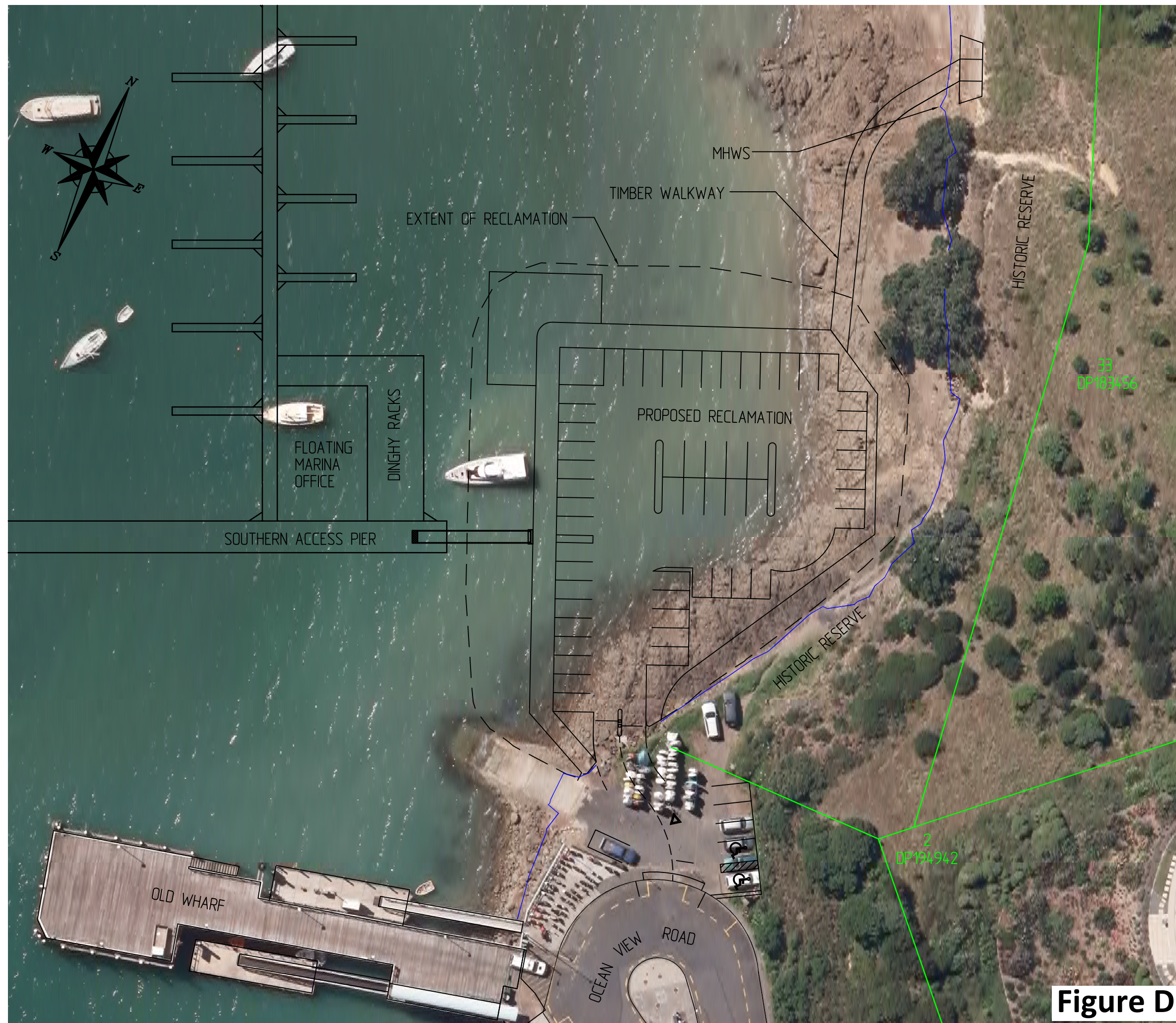
Date: 4/10/2012

Drawing No.: 4208-104 - Rev D

Scale: AS SHOWN

Drawn By: J.C. Designed By: J.M.L.

Approved By: J.M.L.



RESOURCE CONSENT ISSUE

B 8/03/13 CAR PARK ENTRANCE REVISED AS PER T2 ENGINEERS COMMENT
 A 8/03/13 CAR PARK ENTRANCE REVISED

Revisions
 This plan is copyright and cannot be used or reproduced without the written permission of International Marina Consultants

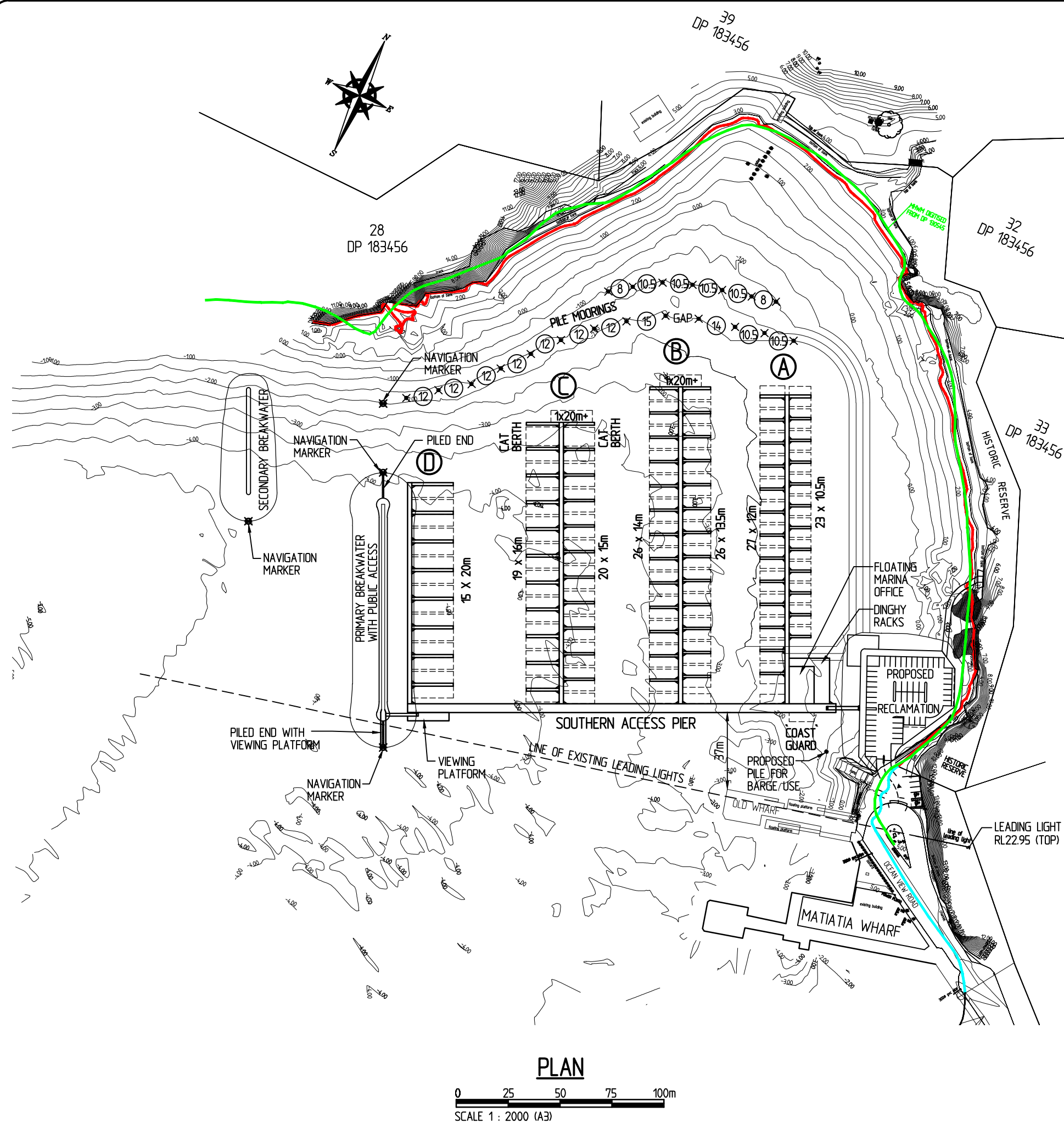
International Marina Consultants
 Consultants to the Marina Industry.
International Marina Consultants Pty. Ltd.
 A.C.N. 079 905 481
 473 Annerley Road
 ANNERLEY QLD 4103
 AUSTRALIA
 Phone (07)3892 5711 Fax (07)3892 5611
 Email : imc@imc-marinas.com

CLIENT:
 WAIHEKE MARINAS LIMITED

PROJECT:
 MATIATIA MARINA

TITLE:
 AERIAL PHOTOGRAPH OF RECLAMATION AND BOARDWALK

Date: 27/02/2013
Drawing No.: 4208-112 - Rev B
Scale: 1 : 500 (A3)
Drawn By: J.C. **Designed By:** J.M.L.
Approved By: J.M.L.



NOTES:

1. ALL DIMENSIONS ARE IN METRES U.N.O.
2. ALL LEVELS ARE IN METRES AND REDUCED TO CHART DATUM.
3. MARINA STRUCTURAL COMPONENTS AND PILES ARE SUBJECT TO DETAILED DESIGN.
4. ON SHORE LAYOUT AND CONTOURS ARE BASED ON AXIS CONSULTANTS DRAWINGS
DRAWING FILE : 10150-SS01.DWG AND
DRAWING FILE : 10150-E01-J.DWG

LEGEND:

- MOORING PILE
- PILE MOORING VESSEL SIZE IN METRES
- MHW (+2.65m C.D.)
- MHW (DP224.12)
- MHW (DIGITISED BY AXIS FROM DP130545)

INDICATIVE BERTH SCHEDULE	
BERTH SIZE	NUMBER
10.5m	23
12m	27
13.5m	26
14m	26
15m	20
16m	19
20m	15
20m+	2
CAT BERTH	2
TOTAL	160

PLAN

0 25 50 75 100m
SCALE 1 : 2000 (A3)

RESOURCE CONSENT ISSUE



H 22/04/14 MHW DESIGNATED
G 11/03/13 BARGE RAMP PILE ADDED
F 11/03/13 PARKING LAYOUT UPDATED
E 14/02/13 ISSUED FOR RESOURCE CONSENT ISSUE
D 14/11/12 PARKING LAYOUT UPDATED, MOORING VESSEL SIZE ADDED

Revisions
This plan is copyright and cannot be used or reproduced without the written permission of International Marina Consultants

International Marina Consultants
Consultants to the Marina Industry.
International Marina Consultants Pty. Ltd.
A.C.N. 079 905 481
473 Annerley Road
ANNERLEY QLD 4103
AUSTRALIA
Phone (07)3892 5711 Fax (07)3892 5611
Email : imc@imc-marinas.com

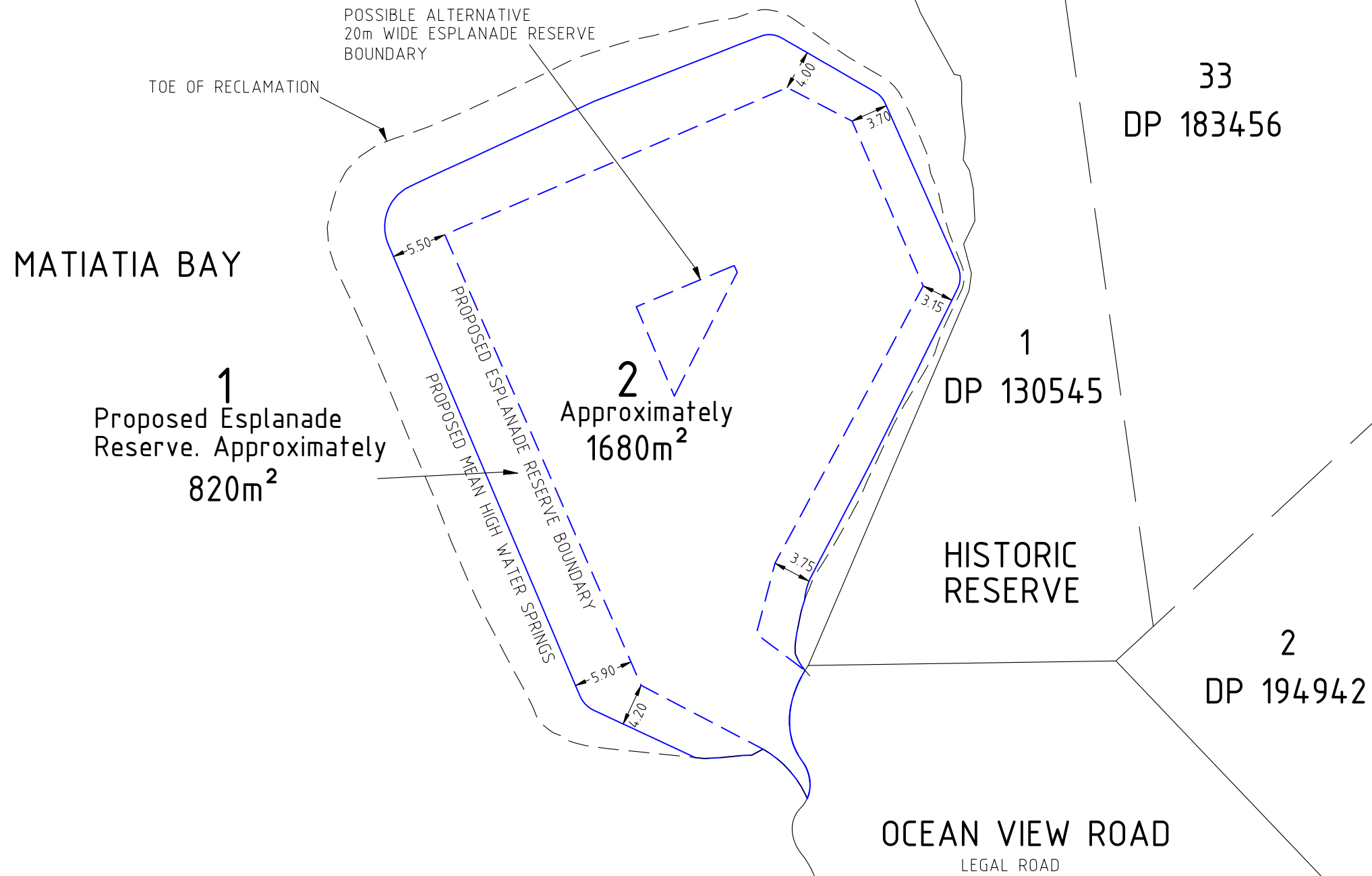
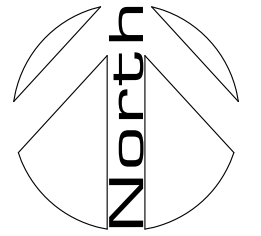
CLIENT:
WAIHEKE MARINAS LIMITED

PROJECT:
MATIATIA MARINA

TITLE:
PROPOSED MARINA LAYOUT

Date: 4/10/2012
Drawing No.: 4208-101 - Rev H
Scale: AS SHOWN
Drawn By: J.C. Designed By: J.M.L.
Approved By: J.M.L.

Figure E



TOTAL AREA OF PROPOSED RECLAMATION
(above proposed Mean High Water Springs)
= 2500m²

Figure F

Figure 32: Esplanade Reserve Plan


Matiatia Marina AEE Folio of Figures 12/03/2013

Surveyed by:	Date:	THIS PLAN AND DESIGN REMAINS THE PROPERTY OF, AND MAY NOT BE REPRODUCED WITHOUT WRITTEN PERMISSION OF AXIS SURVEY CONSULTANTS (Auckl) Ltd.
Drawn by: MH	Date: FEB 2011	
Datum Mark:-		THIS PLAN HAS BEEN PREPARED SOLELY FOR THE BENEFIT OF OUR CLIENT AND AXIS SURVEY CONSULTANTS (AUCK) LTD ACCEPTS NO LIABILITY TO ANY OTHER PARTY.
Datum Level:-		
FIGURED DIMENSIONS ARE TO BE USED IN PREFERENCE TO SCALED DIMENSIONS. CONTOUR INTERVAL IS:		

A	LOT AREAS	28.3.2011
REV	AMENDMENTS	DATE

PROJECT:
WAIHEKE MARINA LTD
PROPOSED RECLAMATION
ESPLANADE RESERVE PLAN

Resource Consent Managers
Land Surveyors
Land Development Engineers



P: 480-2648 - F: 480-2650 106 Mokoia Road,
E: info@axis-consultants.co.nz Birkenhead, Auckland.

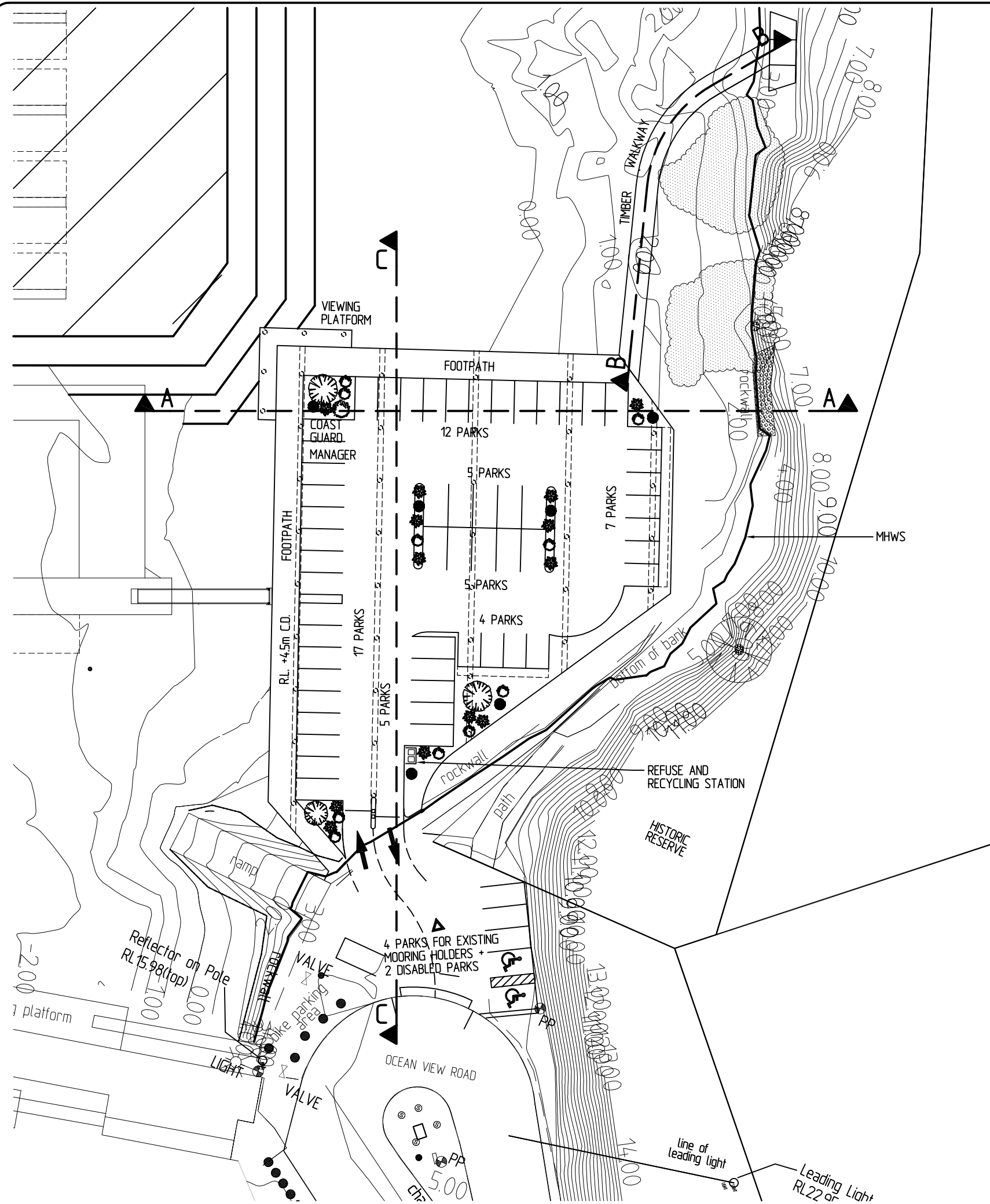
PROJECT No:	10150
DRAWING No:	RC01A
ORIGINAL SCALE:	A3 1:500

\\axis-consultants.co.nz\projects\10150\PROJECT_FIGESPLANRESERVE\DATA\2010\PROJECT_FIGESPLANRESERVE\DATA\10150-RC01A.DWG
 PRINTED: 28/03/2011 09:48:30



NOTES:

1. ALL LEVELS ARE IN METRES AND REDUCED TO CHART DATUM.
2. ON SHORE LAYOUT AND CONTOURS ARE BASED ON AXIS CONSULTANTS DRAWING FILE : 10150-SS01.DWG



FOR SECTIONS A, B & C
REFER TO 4208-116

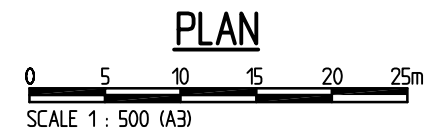


Figure G
RESOURCE CONSENT ISSUE

B 1/04/14 RECONFIGURED VIEWING PLATFORM
A 20/03/14 EXTRA PLATFORM REMOVED

Revisions
This plan is copyright and cannot be used or reproduced without the written permission of International Marina Consultants

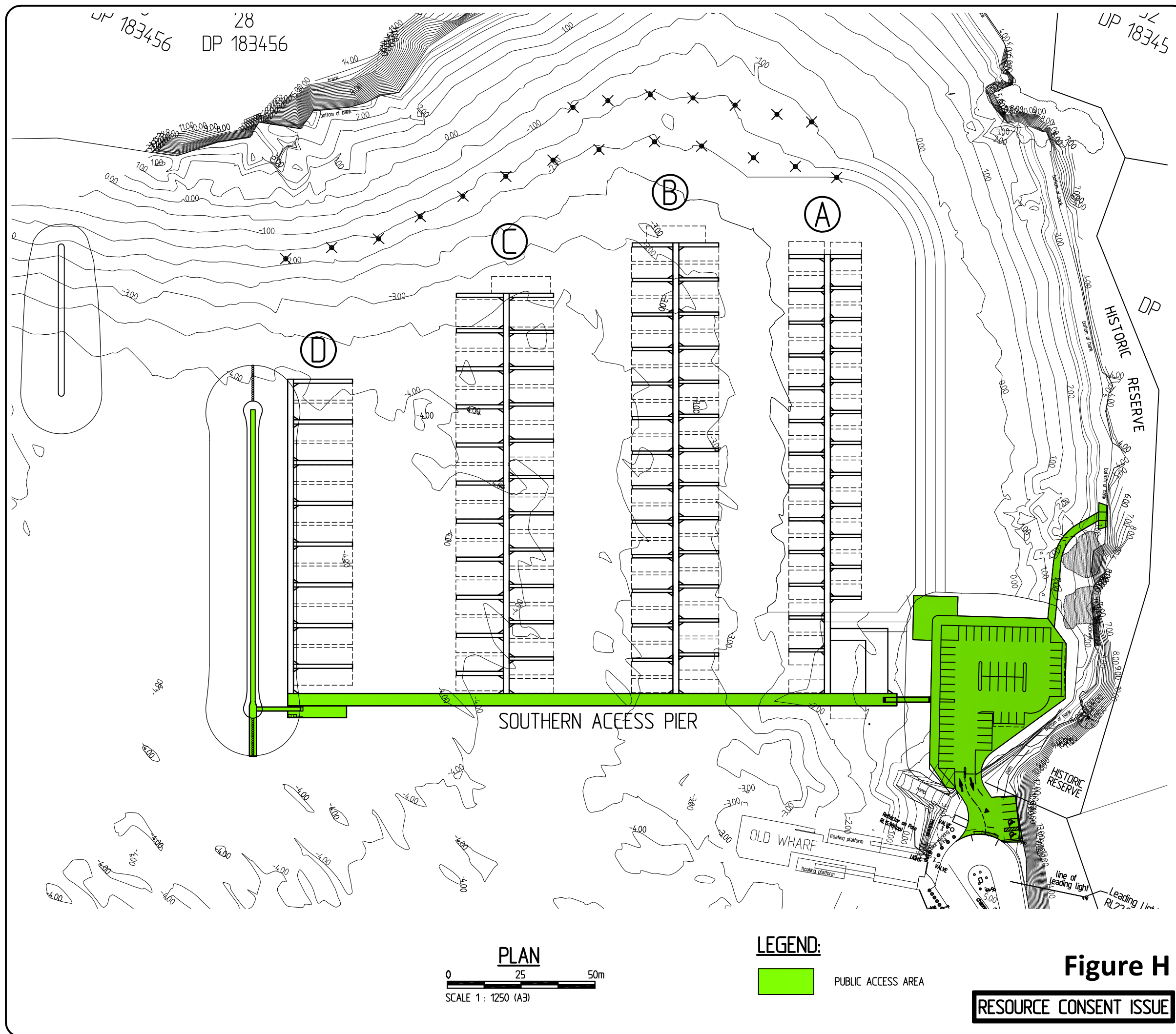
International Marina Consultants
Consultants to the Marina Industry.
International Marina Consultants Pty. Ltd.
A.C.N. 079 905 481
473 Annerley Road
ANNERLEY QLD 4103
AUSTRALIA
Phone (07)3892 5711 Fax (07)3892 5611
Email : imc@imc-marinas.com

CLIENT:
WAIHEKE MARINAS LIMITED

PROJECT:
MATIATIA MARINA

TITLE:
PROPOSED PARKING LAYOUT FOR SUSPENDED DECK CARPARK OPTION

Date:	18/03/2014
Drawing No.:	4208-115 Rev B
Scale:	AS SHOWN
Drawn By: W.L.	Designed By: J.M.L.
Approved By:	J.M.L.



E 11/03/13 PUBLIC ACCESS AREA DESIGNATED
 D 11/03/13 PARKING LAYOUT UPDATED
 C 14/02/13 ISSUED FOR RESOURCE CONSENT ISSUE
 B 14/11/12 PARKING LAYOUT UPDATED
 A 13/11/12 MARINA LAYOUT, PILE MOORINGS AND
 SECONDARY BREAKWATER UPDATED,
 ACCESS AREA REVISED

Revisions

This plan is copyright and cannot
 be used or reproduced without
 the written permission of
 International Marina Consultants

International
 Marina
 Consultants

Consultants to the Marina Industry.

International Marina
 Consultants Pty. Ltd.
 A.C.N. 079 905 481

473 Annerley Road
 ANNERLEY QLD 4103
 AUSTRALIA
 Phone (07)3892 5711 Fax (07)3892 5611
 Email : imc@imc-marinas.com

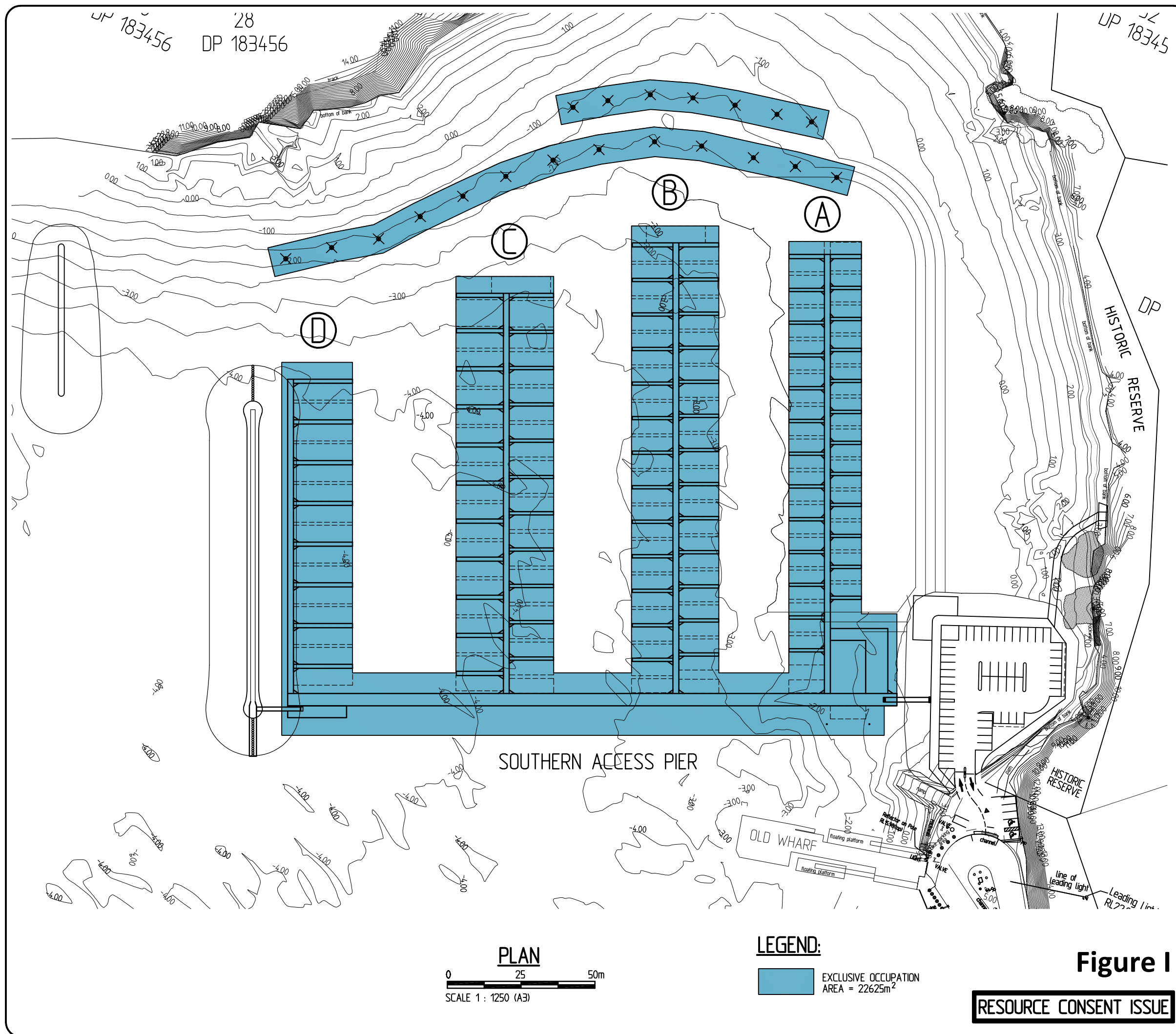
CLIENT:
WAIHEKE MARINAS LIMITED

PROJECT:
MATIATIA MARINA

TITLE:
**PUBLIC PEDESTRIAN ACCESS
 PLAN**

Date:	5/10/2012
Drawing No.:	4208-109 - Rev E
Scale:	AS SHOWN
Drawn By:	J.C.
Designed By:	J.M.L.
Approved By:	J.M.L.

Figure H
RESOURCE CONSENT ISSUE



- E 11/03/13 PARKING LAYOUT UPDATED
- D 14/02/13 ISSUED FOR RESOURCE CONSENT ISSUE
- C 14/11/12 PARKING LAYOUT UPDATED
- B 13/11/12 MARINA LAYOUT, PILE MOORING AND SECONDARY BREAKWATER UPDATED, EXCLUSIVE AREA REVISED
- A 8/10/12 EXCLUSIVE AREA REVISED

Revisions

This plan is copyright and cannot be used or reproduced without the written permission of International Marina Consultants

International Marina Consultants

Consultants to the Marina Industry.

International Marina Consultants Pty. Ltd.
A.C.N. 079 905 481

473 Annerley Road
ANNERLEY QLD 4103
AUSTRALIA
Phone (07)3892 5711 Fax (07)3892 5611
Email : imc@imc-marinas.com

CLIENT:

WAIHEKE MARINAS LIMITED

PROJECT:

MATIATIA MARINA

TITLE:

EXCLUSIVE OCCUPATION AREA PLAN

Date: 5/10/2012

Drawing No.: 4208-106 - Rev E

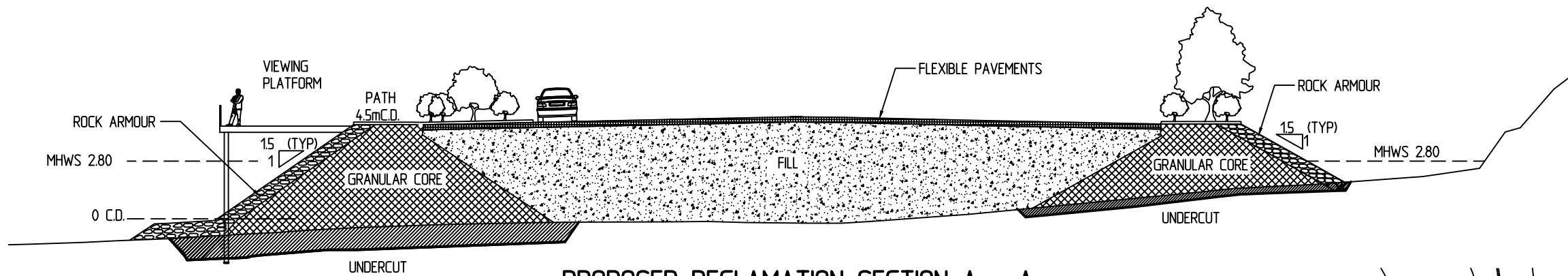
Scale: AS SHOWN

Drawn By: J.C. Designed By: J.M.L.

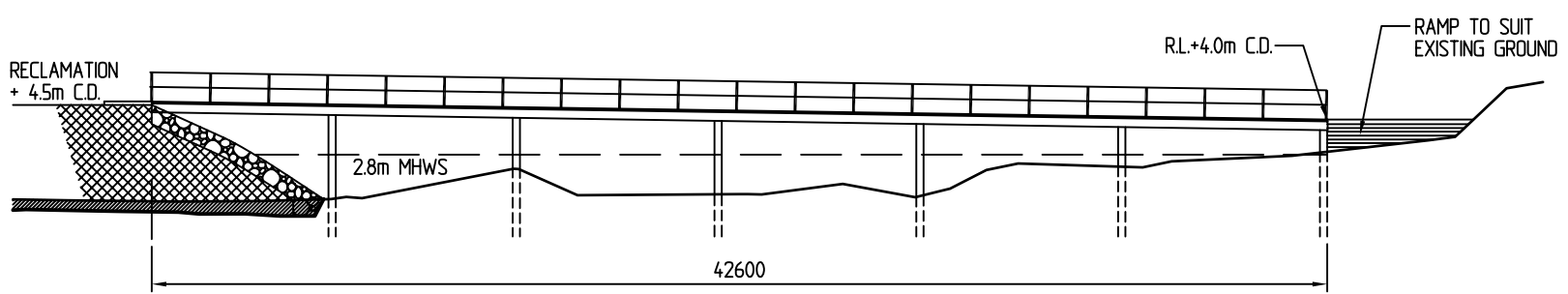
Approved By: J.M.L.

Figure 1

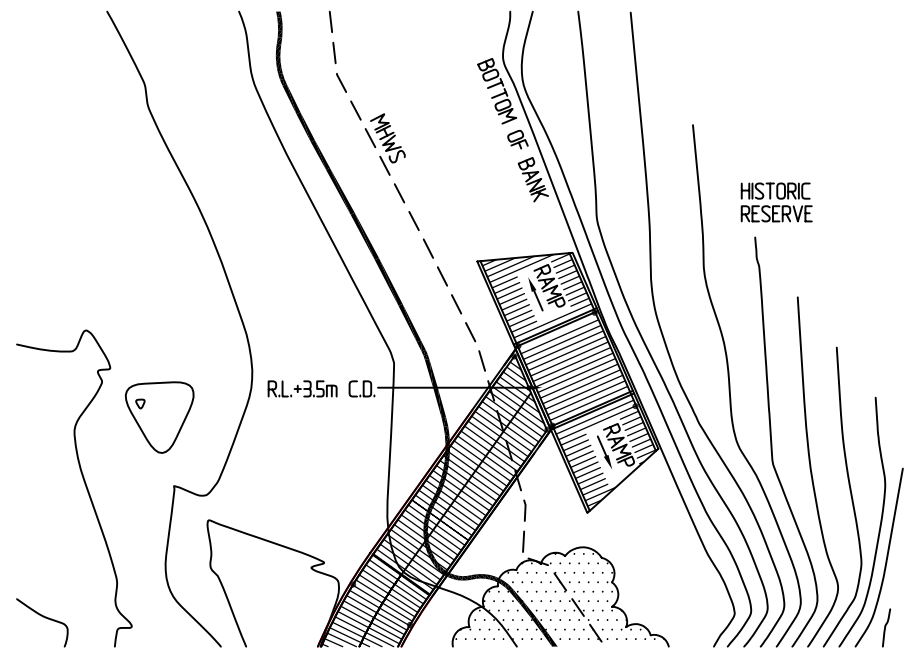
RESOURCE CONSENT ISSUE



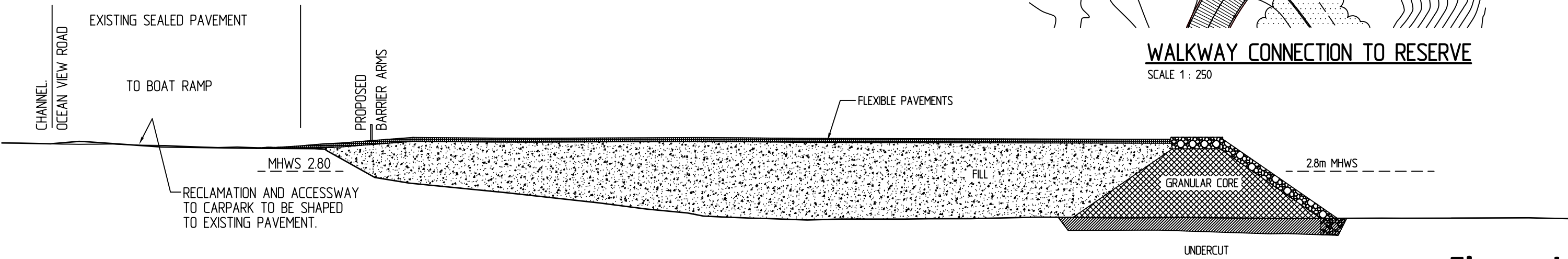
PROPOSED RECLAMATION SECTION A - A
SCALE 1 : 250



TIMBER WALKWAY - SECTION B - B
SCALE 1 : 250



WALKWAY CONNECTION TO RESERVE
SCALE 1 : 250



PROPOSED RECLAMATION SECTION C - C
SCALE 1 : 250

Figure J

RESOURCE CONSENT ISSUE



International Marina Consultants
Consultants to the Marina Industry.
International Marina Consultants Pty. Ltd.
A.C.N. 079 905 481
473 Annerley Road
ANNERLEY QLD 4103
AUSTRALIA
Phone (07)38925711
Fax (07)38925611
Email : imc@imc-marinas.com

Client:
WAIHEKE MARINAS LIMITED

Project:
MATIATIA MARINA

Title:
CROSS SECTION PLAN OF RECLAMATION & BOARDWALK

Revision:
A 13/11/12 SECTION B REVISED
B 14/02/13 ISSUED FOR RESOURCE CONSENT ISSUE

© This plan is copyright and cannot be used or reproduced without the written permission of International Marina Consultants

Date:	5/10/2012
Drawing No.:	4208-105 - Rev B
Scale:	AS SHOWN
Drawn By:	J.C.
Designed By:	J.M.L.
Approved By:	J.M.L.

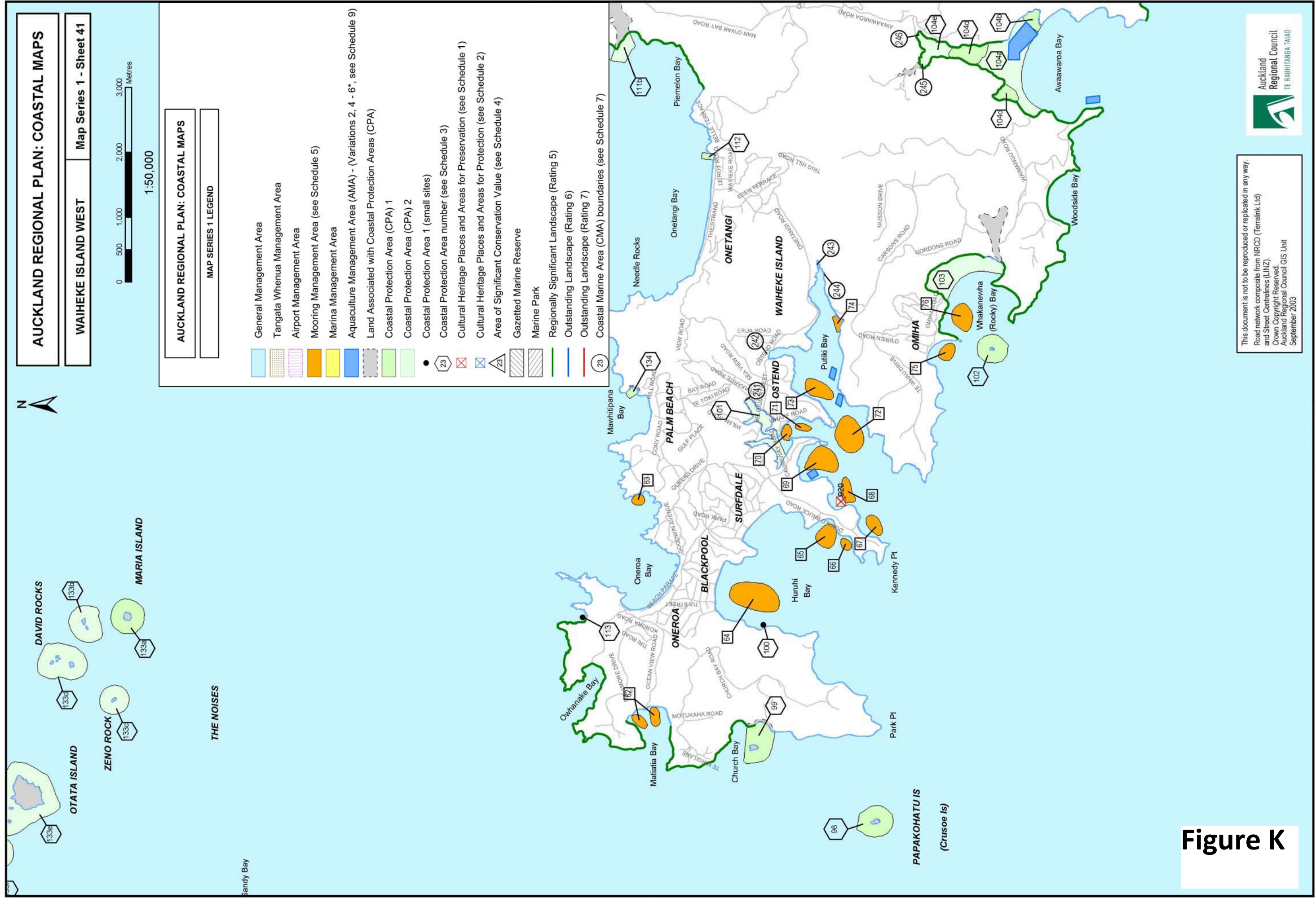


Figure 10: Regional Coastal Plan Map of Matiatia Bay

This document is not to be reproduced or replicated in any way.
 Road network composite from NRCO (Terralink Ltd) and Street Centrelines (LINZ).
 Crown Copyright Reserved.
 Auckland Regional Council GIS Unit
 September 2003



KEY:

Mooring Management Area

Date of Aerial: January 2012

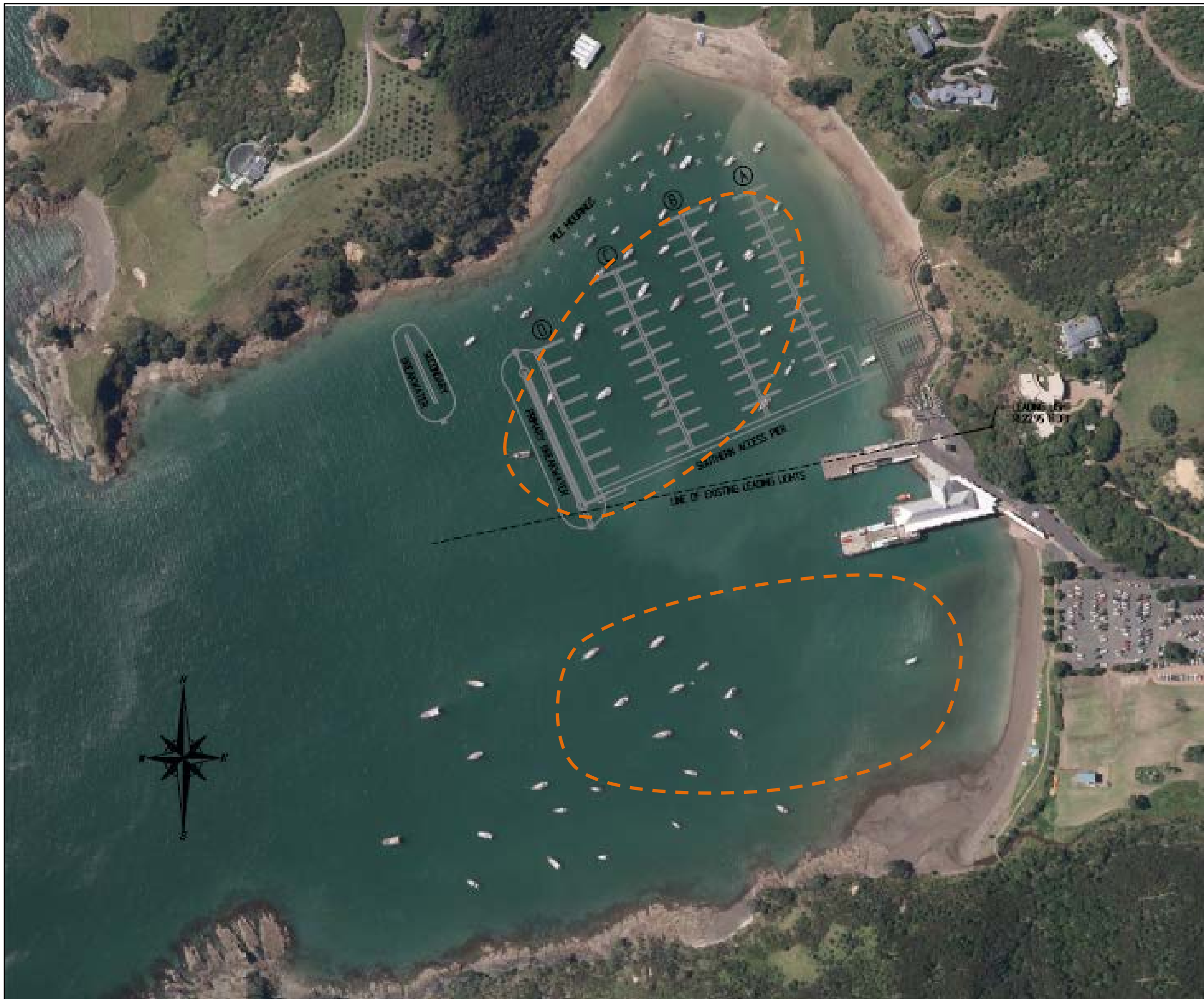


Figure L

Hauraki Gulf

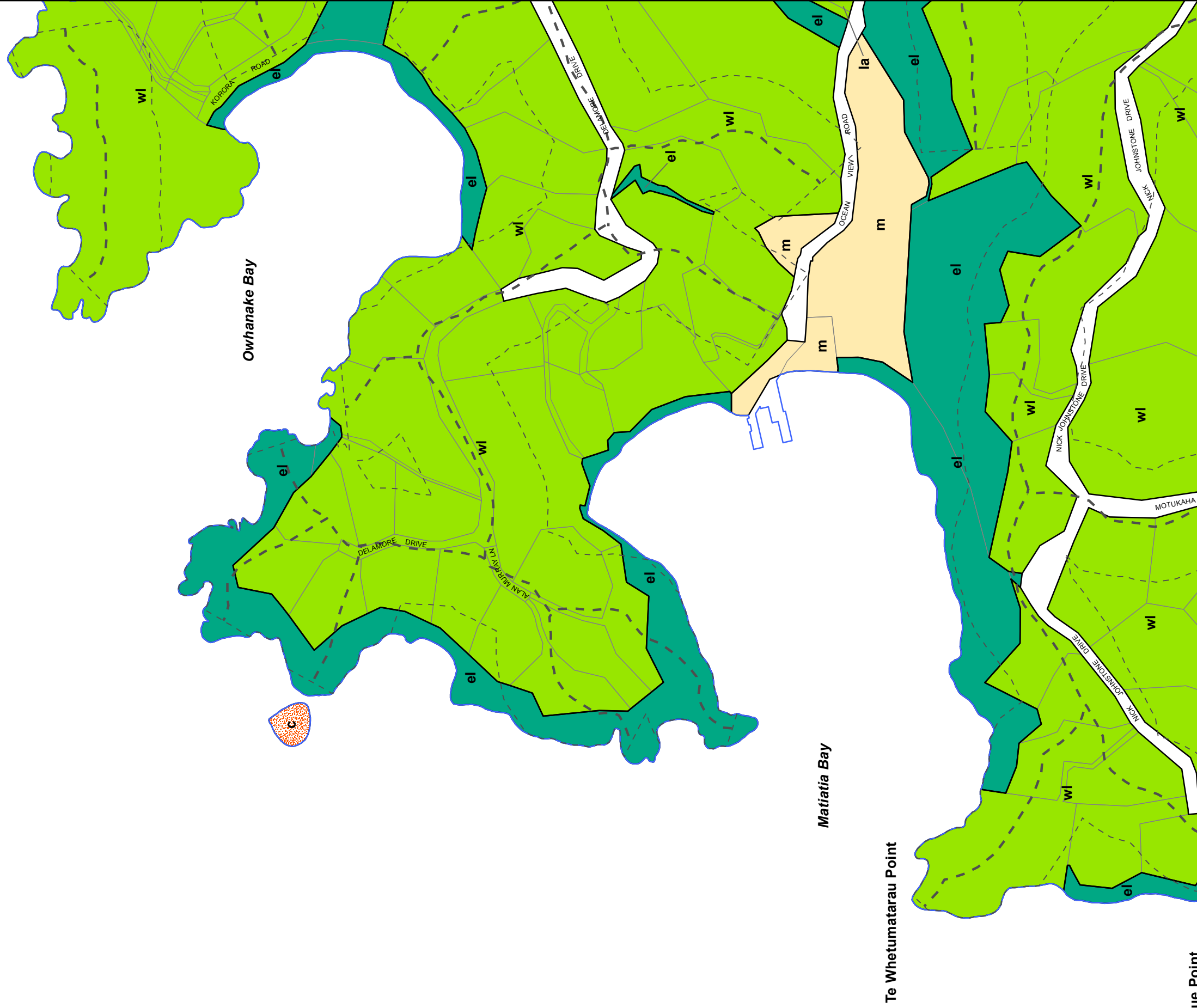


Figure M

Mahuehue Point



Sheet 1
Map no. 1

Auckland Council District Plan - Hauraki Gulf Islands Section - Operative 2013

Updated 27/02/2013

Scale:
1:7500 @ A3



32	1	2
31	7	8

Figure 10a.1 Matiatia

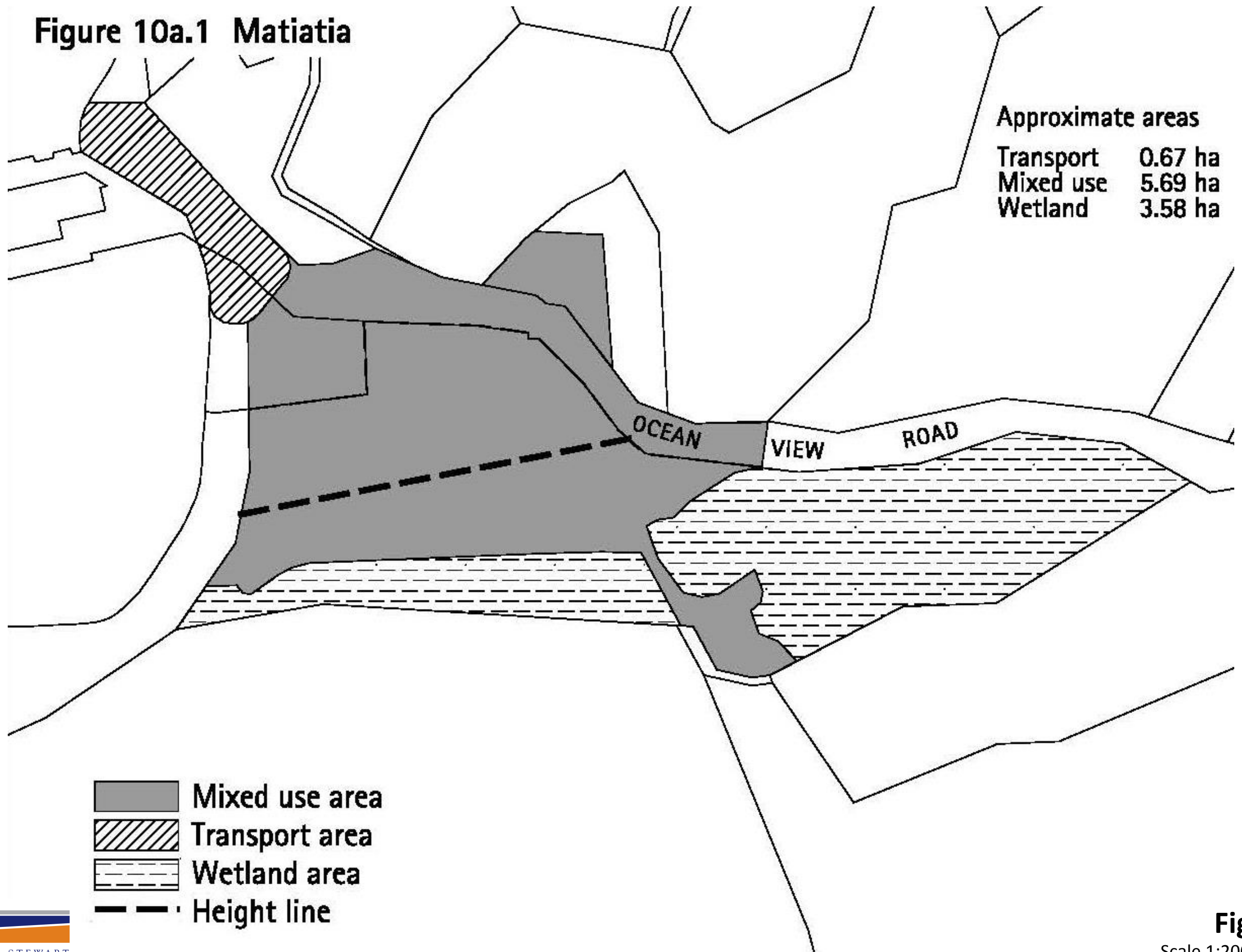


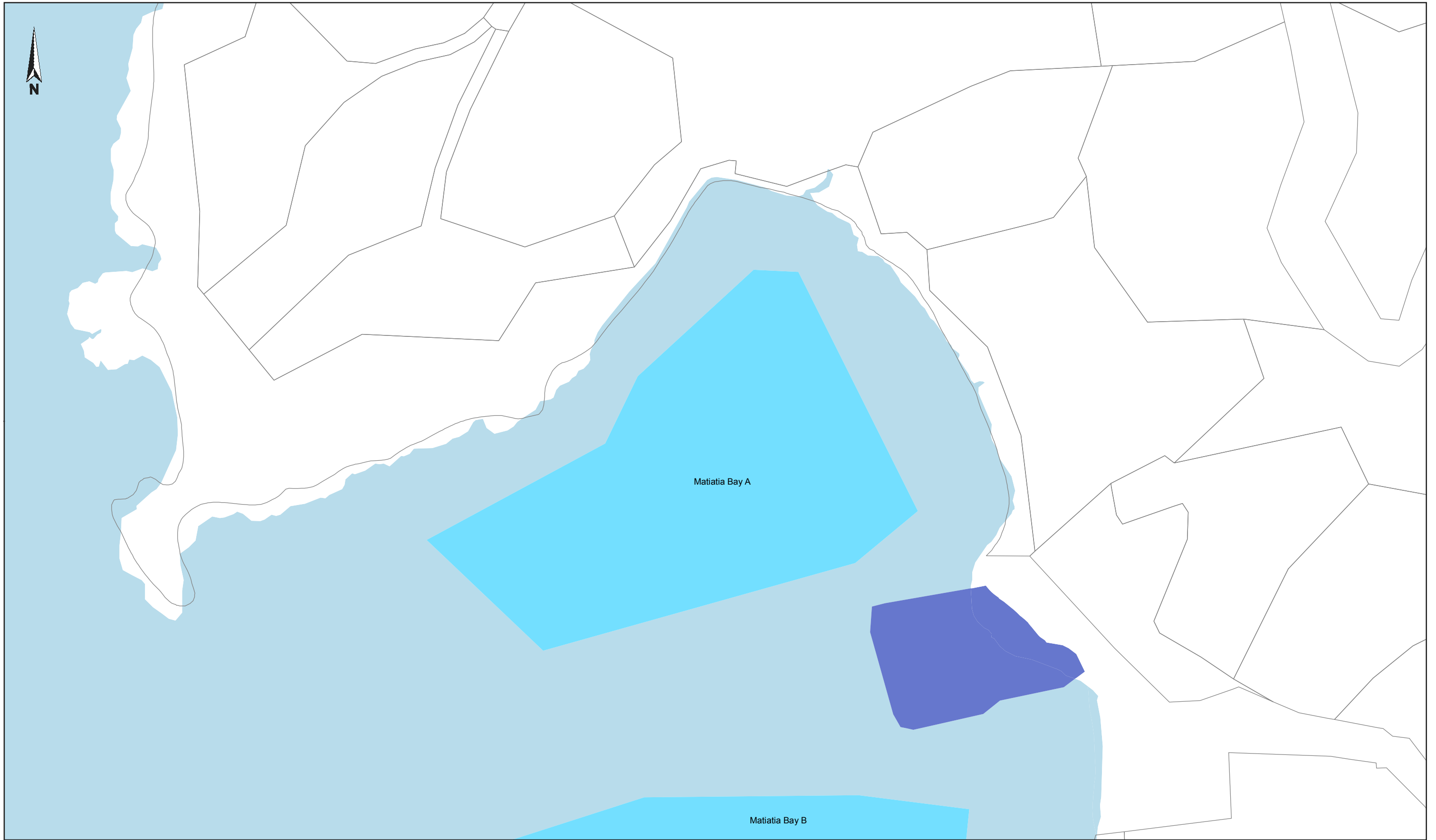


Figure O

Matiatia District Plan Areas

© Auckland Council 2014. All rights reserved. This document is the property of Auckland Council and is loaned to you for your personal use only. It is not to be distributed, copied, or otherwise used without the prior written consent of Auckland Council. Auckland Council is not responsible for any errors or omissions in this document.





This map/plan is illustrative only and all information should be independently verified on site before taking any action. Copyright Auckland Council. Land Parcel Boundary information from LINZ (Crown Copyright Reserved). Whilst due care has been taken, Auckland Council gives no warranty as to the accuracy and completeness of any information on this map/plan and accepts no liability for any error, omission or use of the information. Height datum: Auckland 1946.

1:2,500 Auckland Council
Plan Created: 17/2/14

Unitary Plan Base Zone


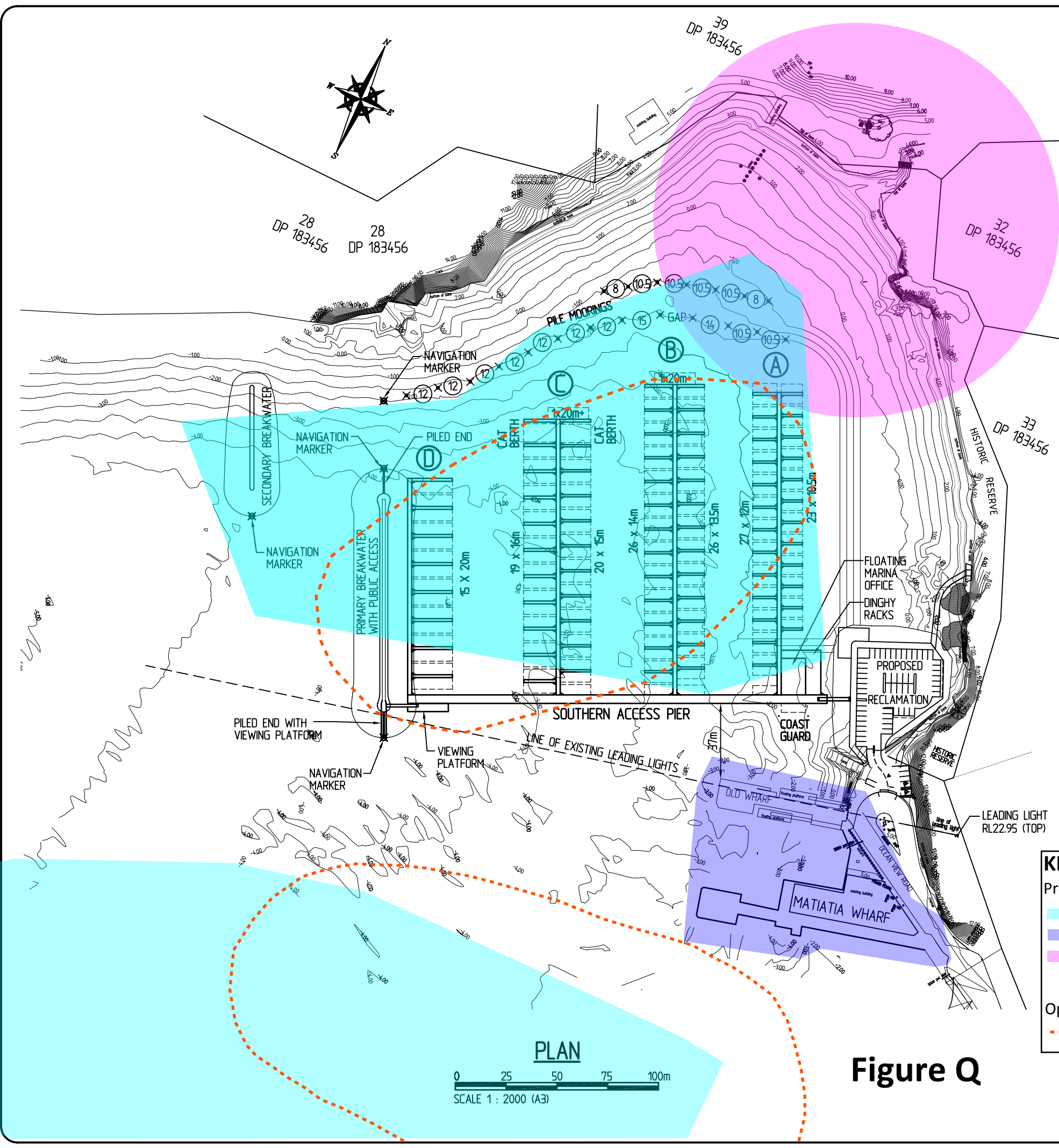
KEY	
	Mooring
	Ferry Terminal



Figure P



NOTES:

1. ALL DIMENSIONS ARE IN METRES U.N.O.
2. ALL LEVELS ARE IN METRES AND REDUCED TO CHART DATUM.
3. MARINA STRUCTURAL COMPONENTS AND PILES ARE SUBJECT TO DETAILED DESIGN.
4. ON SHORE LAYOUT AND CONTOURS ARE BASED ON AXIS CONSULTANTS DRAWING DRAWING FILE : 10150-SS01.DWG

LEGEND:

- ✕ MOORING PILE
- ⊙ PILE MOORING VESSEL SIZE IN METRES

INDICATIVE BERTH SCHEDULE	
BERTH SIZE	NUMBER
10.5m	23
12m	27
13.5m	26
14m	26
15m	20
16m	19
20m	15
20m+	2
CAT BERTH	2
TOTAL	160

KEY

- Proposed Unitary Plan
- Mooring Zone
- Ferry Terminal Zone
- Sites and Places of Value to Mana Whenua Overlay
- Operative Regional Coastal Plan
- Mooring Management Area

Figure Q

RESOURCE CONSENT ISSUE

ANDREW STEWART

Revisions

F 11/03/13 PARKING LAYOUT UPDATED
 E 14/02/13 ISSUED FOR RESOURCE CONSENT ISSUE
 D 14/11/12 PARKING LAYOUT UPDATED, MOORING VESSEL SIZE ADDED
 C 13/11/12 SECONDARY BREAKWATER WIDTH AND PILE MOORING REVISED
 B 31/10/12 DINGHY RACK RELOCATED

This plan is copyright and cannot be used or reproduced without the written permission of International Marina Consultants

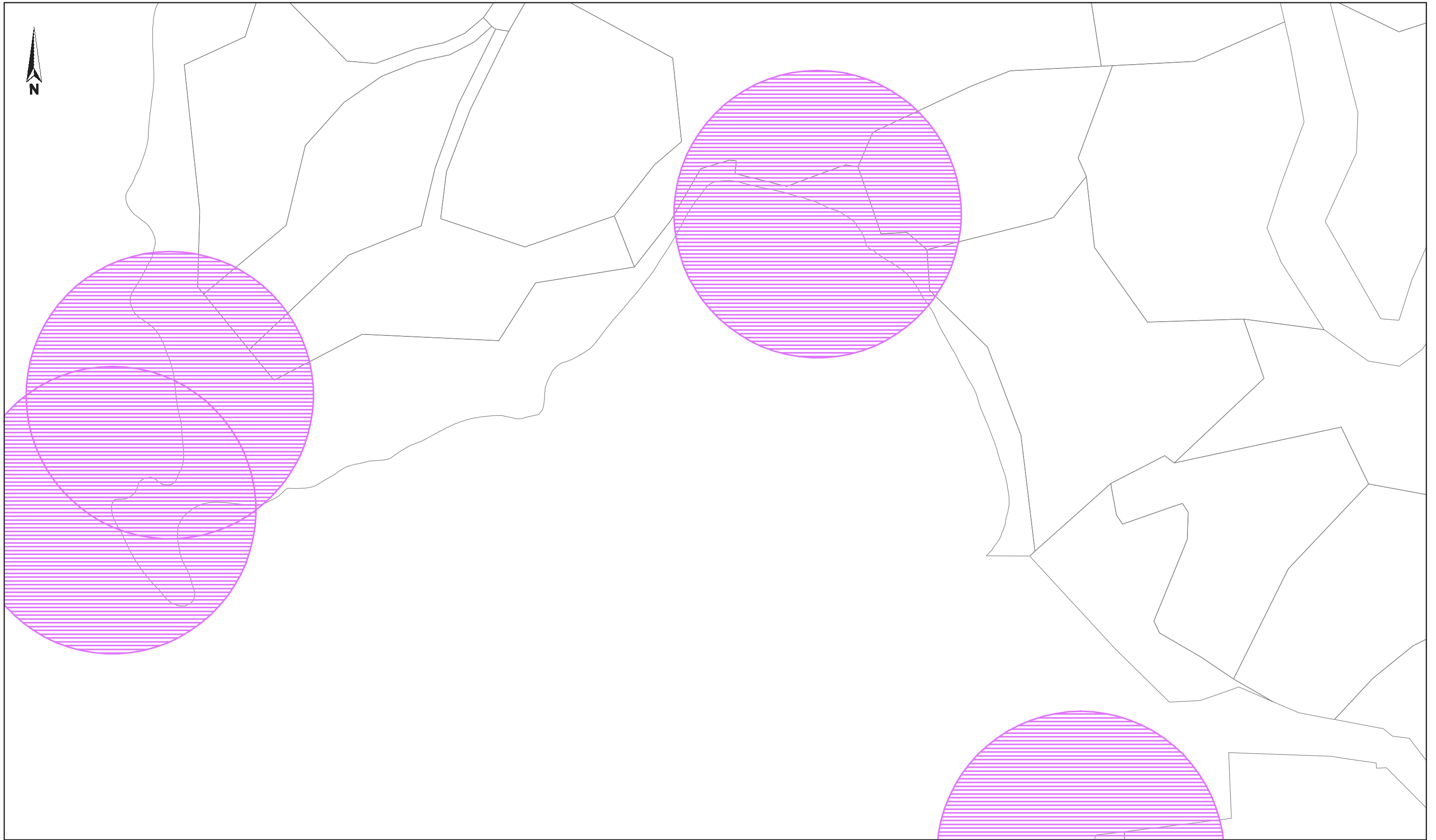
International Marina Consultants
 Consultants to the Marina Industry.
 International Marina Consultants Pty. Ltd.
 A.C.N. 079 905 481
 473 Annerley Road
 ANNERLEY QLD 4103
 AUSTRALIA
 Phone (07)3892 5711 Fax (07)3892 5611
 Email : imc@imc-marinas.com

CLIENT:
WAIHEKE MARINAS LIMITED

PROJECT:
MATIATIA MARINA

TITLE:
PROPOSED MARINA LAYOUT

Date: 4/10/2012
Drawing No.: 4208-101 - Rev F
Scale: AS SHOWN
Drawn By: J.C. **Designed By:** J.M.L.
Approved By: J.M.L.



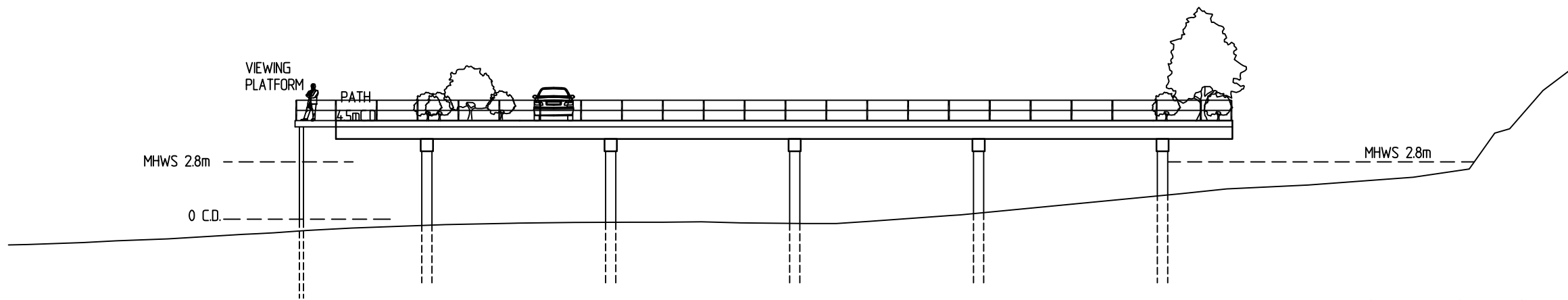
This map/plan is illustrative only and all information should be independently verified on site before taking any action. Copyright Auckland Council. Land Parcel Boundary information from LINZ (Crown Copyright Reserved). Whilst due care has been taken, Auckland Council gives no warranty as to the accuracy and completeness of any information on this map/plan and accepts no liability for any error, omission or use of the information. Height datum: Auckland 1946.

1:2,500 Auckland Council
Plan Created: 17/2/14

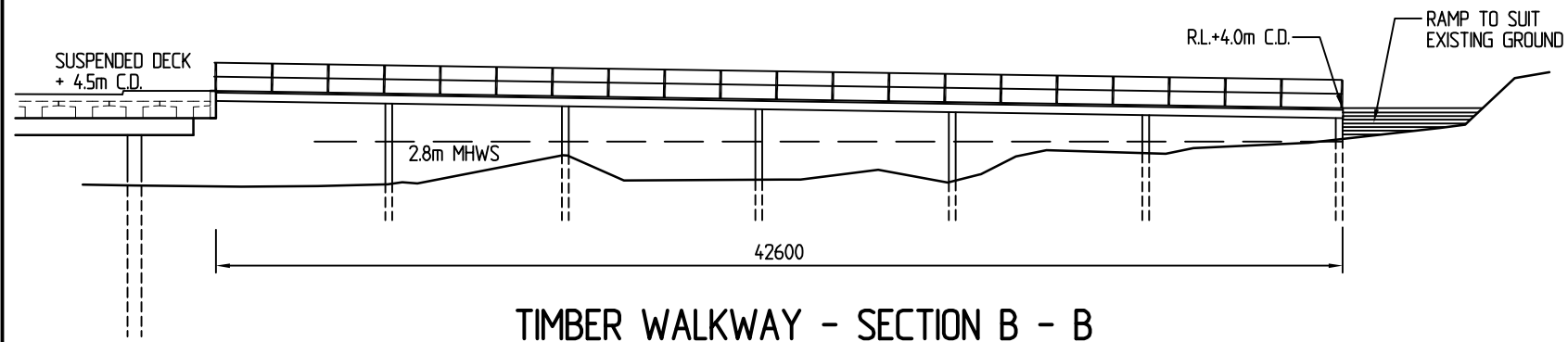
Historic Heritage

Figure R

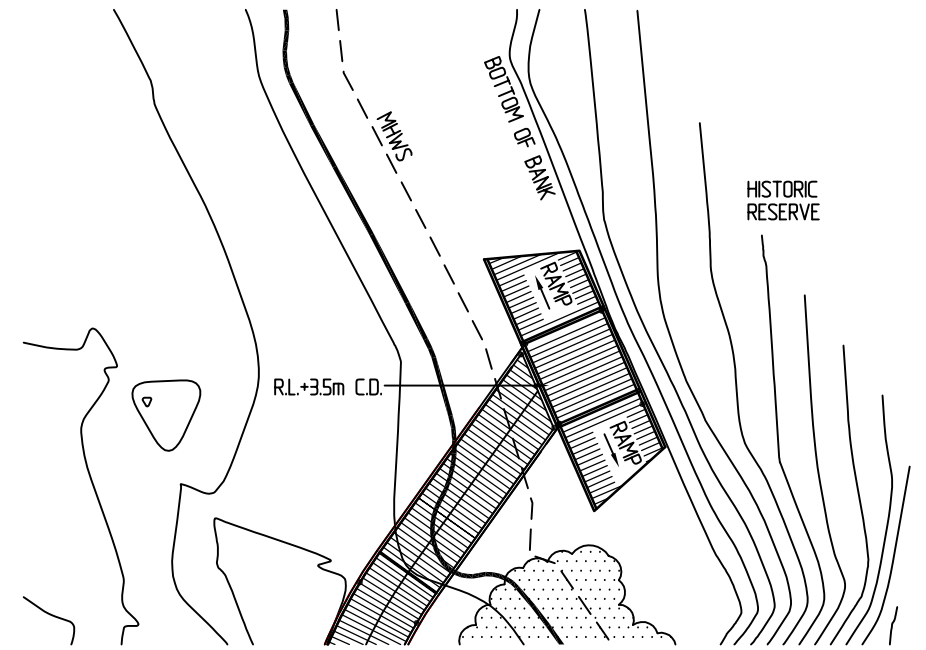




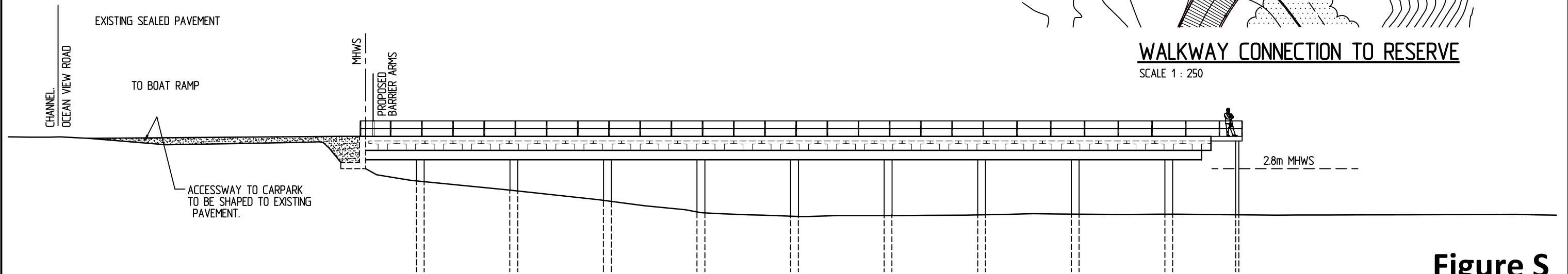
SUSPENDED DECK SECTION A - A
SCALE 1 : 250



TIMBER WALKWAY - SECTION B - B
SCALE 1 : 250



WALKWAY CONNECTION TO RESERVE
SCALE 1 : 250



SUSPENDED DECK SECTION C - C
SCALE 1 : 250

Figure S

RESOURCE CONSENT ISSUE



**International
Marina
Consultants**

Consultants to the Marina Industry.

International Marina
Consultants Pty. Ltd.
A.C.N. 079 905 481

473 Annerley Road
ANNERLEY QLD 4103
AUSTRALIA
Phone (07)38925711
Fax (07)38925611
Email : imc@imc-marinas.com

Client:
WAIHEKE MARINAS LIMITED

Project:
MATIATIA MARINA

Title:
**CROSS SECTION PLAN OF
SUSPENDED DECK OPTION
& BOARDWALK**

Revision:
A 20/03/14 EXTRA PLATFORM REMOVED
B 27/03/14 RECONFIGURED VIEWING PLATFORM

© This plan is copyright and cannot be used or reproduced without the written permission of International Marina Consultants

Date: 18/03/2014

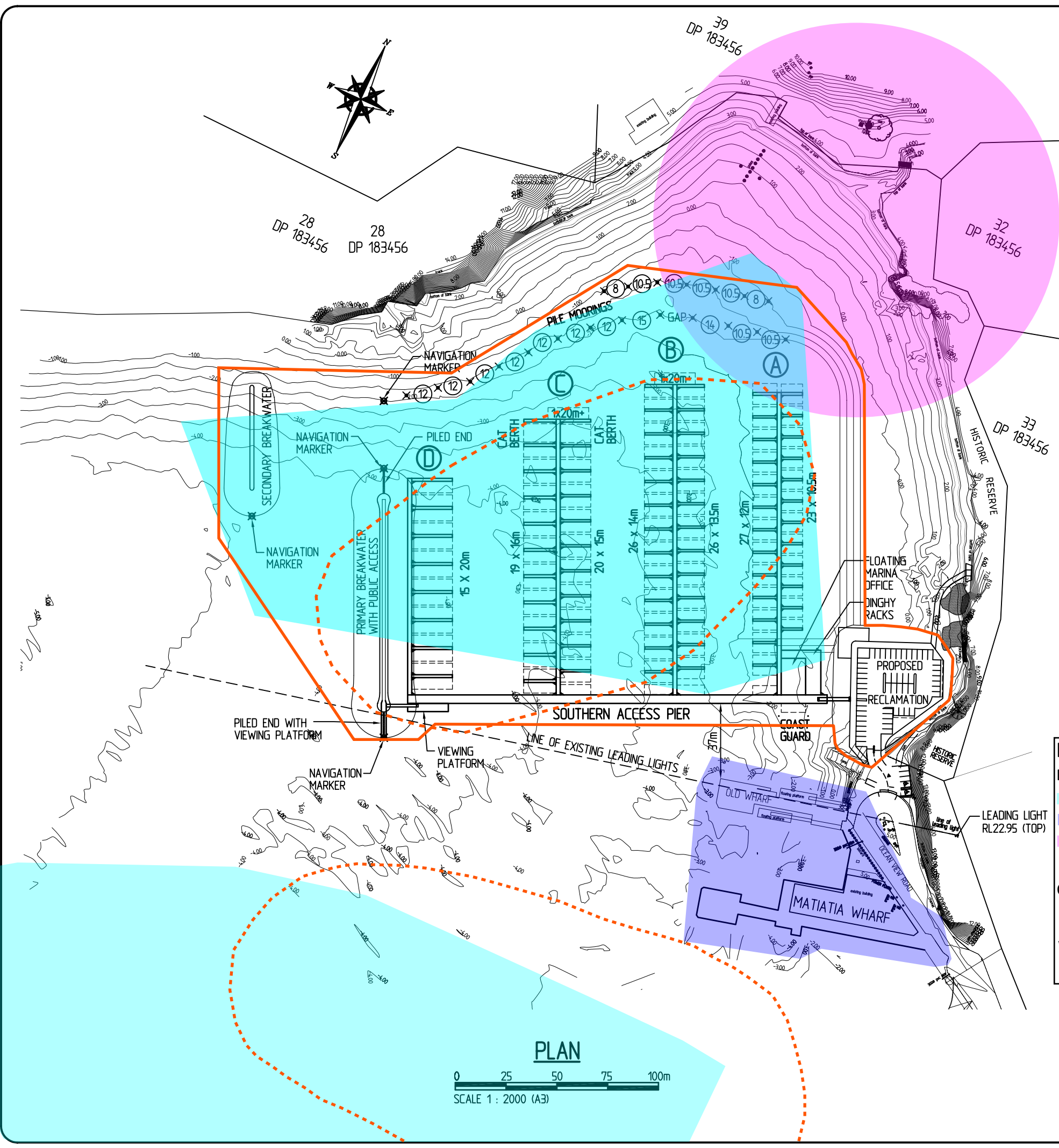
Drawing No.: 4208-116 Rev B

Scale: AS SHOWN

Drawn By: W.L.

Designed By: J.M.L.

Approved By: J.M.L.



NOTES:

1. ALL DIMENSIONS ARE IN METRES U.N.O.
2. ALL LEVELS ARE IN METRES AND REDUCED TO CHART DATUM.
3. MARINA STRUCTURAL COMPONENTS AND PILES ARE SUBJECT TO DETAILED DESIGN.
4. ON SHORE LAYOUT AND CONTOURS ARE BASED ON AXIS CONSULTANTS DRAWING DRAWING FILE : 10150-SS01.DWG

LEGEND:

- ✕ MOORING PILE
- ⊙ PILE MOORING VESSEL SIZE IN METRES

INDICATIVE BERTH SCHEDULE	
BERTH SIZE	NUMBER
10.5m	23
12m	27
13.5m	26
14m	26
15m	20
16m	19
20m	15
20m+	2
CAT BERTH	2
TOTAL	160

KEY

- Proposed Unitary Plan
- Mooring Zone
- Ferry Terminal Zone
- Sites and Places of Value to Mana Whenua Overlay
- Operative Regional Coastal Plan
- Mooring Management Area
- WML Submission
- Proposed Marina Zone



Revisions

F 11/03/13 PARKING LAYOUT UPDATED
 E 14/02/13 ISSUED FOR RESOURCE CONSENT ISSUE
 D 14/11/12 PARKING LAYOUT UPDATED, MOORING VESSEL SIZE ADDED
 C 13/11/12 SECONDARY BREAKWATER WIDTH AND PILE MOORING REVISED
 B 31/10/12 DINGHY RACK RELOCATED

This plan is copyright and cannot be used or reproduced without the written permission of International Marina Consultants

International Marina Consultants
 Consultants to the Marina Industry.
 International Marina Consultants Pty. Ltd.
 A.C.N. 079 905 481
 473 Annerley Road
 ANNERLEY QLD 4103
 AUSTRALIA
 Phone (07)3892 5711 Fax (07)3892 5611
 Email : imc@imc-marinas.com

CLIENT:
WAIHEKE MARINAS LIMITED

PROJECT:
MATIATIA MARINA

TITLE:
PROPOSED MARINA LAYOUT

Date: 4/10/2012
Drawing No.: 4208-101 - Rev F
Scale: AS SHOWN
Drawn By: J.C. **Designed By:** J.M.L.
Approved By: J.M.L.

Figure T

RESOURCE CONSENT ISSUE